

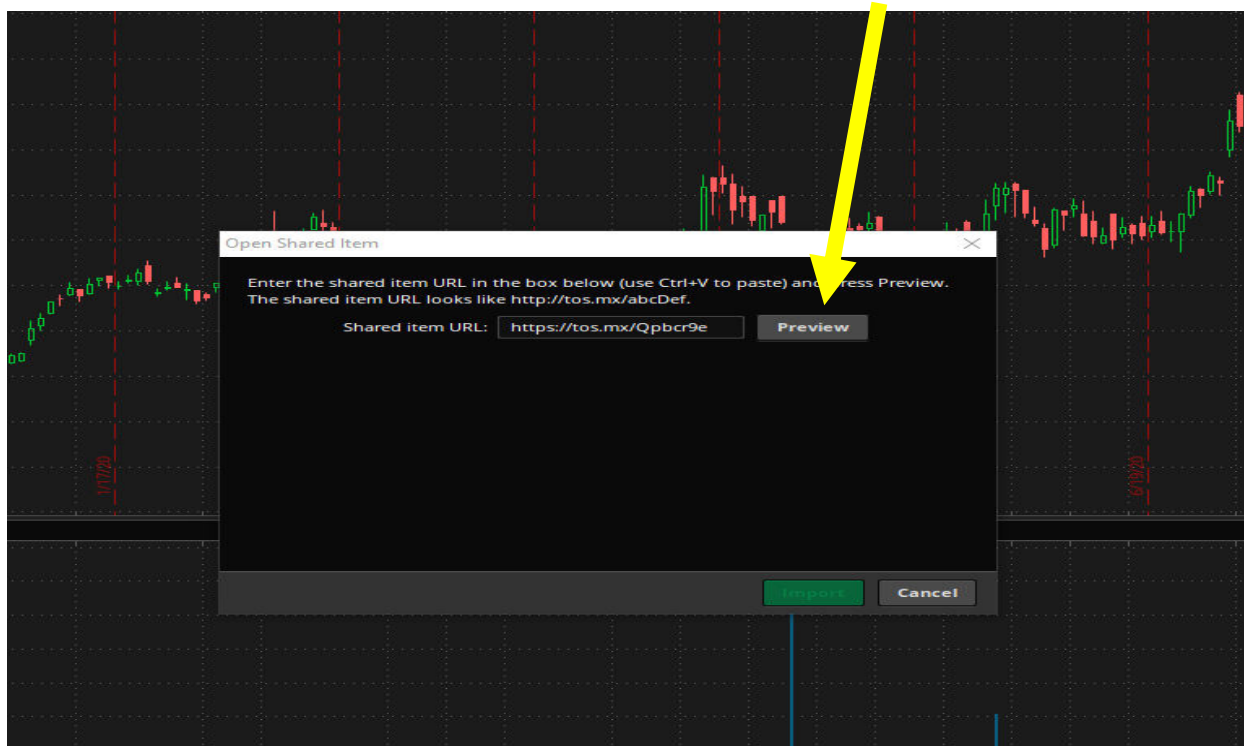
## 1) Starting Default Screen (under charts)



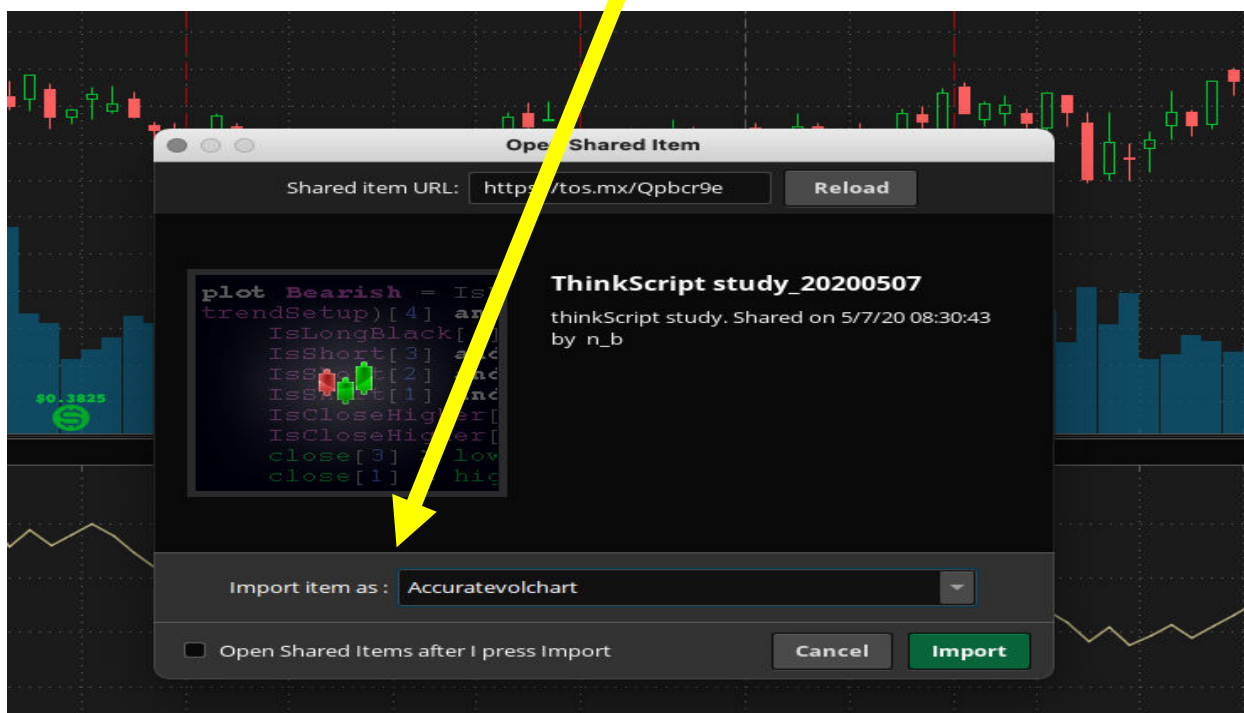
## 2) Goto Setup->Open Shared item



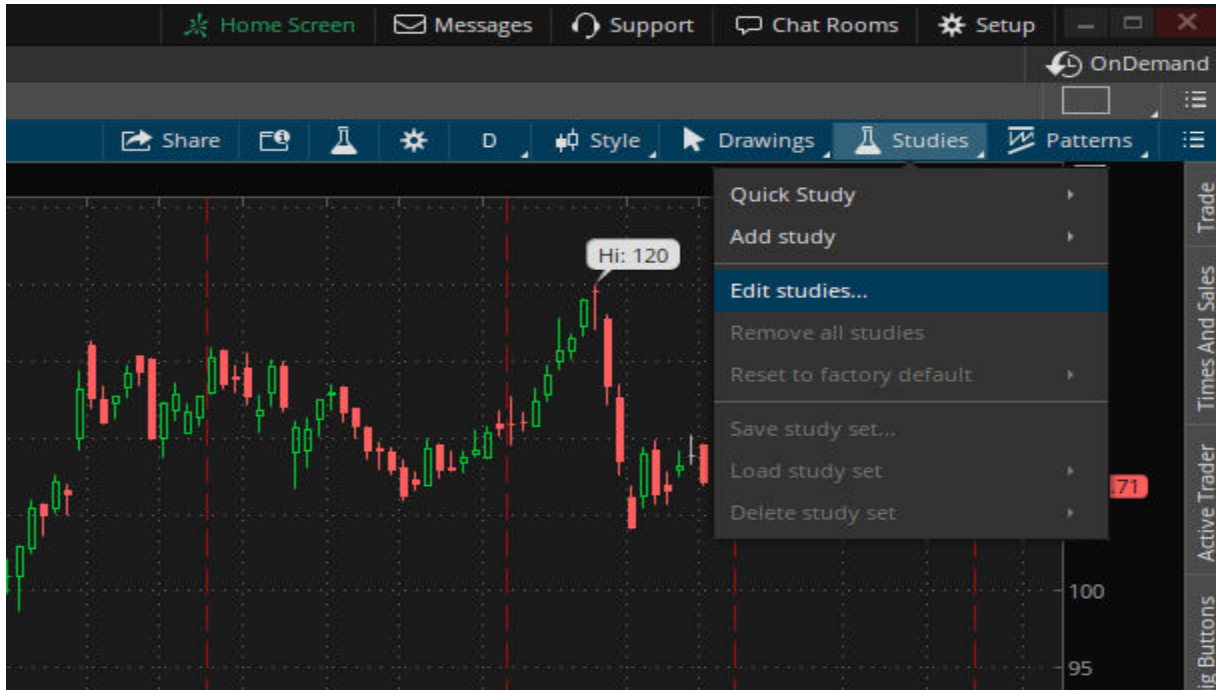
3) Paste <http://tos.mx/XBNJDRT> into the URL. Then click Preview.



4) Rename by typing new name into "Import item as" (I suggest Accuratevolchart as name) -> then click Import.



5) Go to Studies-> Edit studies



6) Find Accuratevolchart (or whatever name you gave for the script on step 4 and click Add Selected

